

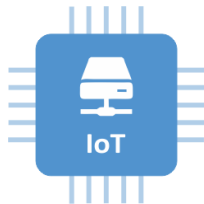
Labeeb IoT Documentation



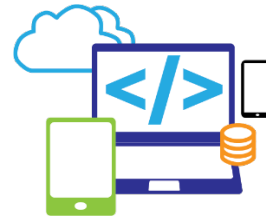
- [Getting Started](#)
- [How the Labeeb IoT Platform is Designed](#)
- [How to Access Labeeb IoT Servers](#)
- [How to Build a Business Rule and Serverless Application](#)
- [How to Build a Customized Dashboard](#)
- [How to Define your Data and your Devices](#)
- [How to Test your Labeeb IoT Account](#)
- [How to Use the Portal](#)
- [Predictive Maintenance Module](#)



- [Tutorial N°1: Air Monitoring Using Raspberry Pi](#)
- [Tutorial N°2: Wearable Sensors with Android Application](#)
- [Tutorial N°3: Altimeter Sensor on ESP8266 Board](#)
- [Tutorial N°4: Connect Meshlium IoT Gateway to Labeeb IoT](#)
- [Tutorial N°5: Labeeb IoT Applications](#)



- [How to Connect Your Device to Labeeb IoT](#)
- [MQTT Communications Protocol](#)
- [Arduino library for Labeeb IoT Devices](#)
- [C SDK for Labeeb IoT Devices](#)
- [Python SDK for Labeeb IoT Devices](#)
- [HTTP Communications Protocol](#)
- [COAP Communications Protocol](#)



Labeeb IoT REST API Documentation

- [PHP wrapper to RestFul/JSON web services](#)
- [Labeeb IoT SDKs](#)

Table of Contents

- [PLATFORM FEATURES](#)
- [RELEASE 4,0](#)
 - [NEW FEATURES](#)
- [RELEASE 3.1](#)
 - [NEW FEATURES](#)
 - [BUG FIXES](#)

PLATFORM FEATURES

Labeeb IoT platform provides the following features:

- Secure sending and retrieving data through the support of https and SSL/TLS protocols.
- Support connections from IoT devices through MQTT, MQTT over Websocket, HTTP Restfull interface and COAP
- Storage in SQL and No-SQL data bases.
- Analytics to retrieve and aggregate data from our big data.
- Business Rules Manager.
- Restful API to build your applications and manage your devices.

RELEASE 4,0

This release mainly introduces a new UI/UX with the dynamic dashboard that users can build and the support on a new communication protocol to connect IoT devices.

NEW FEATURES

- [LBBMZM-422] - Labeeb IoT Web Portal migration and enhancements
- [LBBMZM-423] - Support for users defined dashboards
- [LBBMZM-521] - DCM support of JSON over HTTP

RELEASE 3.1

This release mainly introduces enhancements on the rules engine and the support of sending/storing multimedia.

NEW FEATURES

- [LBBMZM-285] - Add capability to share data with external sources (external MQTT brokers, SQL databases, REST web services and SMS)
- [LBBMZM-409] - Support for Multimedia Unstructured Data
- [LBBMZM-419] - Usage restriction alerts via email

BUG FIXES

- [LBBMZM-446] - Signup issues when enterprise name has capital letters

Version	Date	Comment
Current Version (v. 24)	Oct 26, 2017 16:11	Heni Karaa
v. 23	Oct 26, 2017 16:11	Heni Karaa
v. 22	Apr 13, 2017 13:49	Heni Karaa
v. 21	Apr 13, 2017 13:35	Heni Karaa
v. 20	Apr 13, 2017 13:30	Heni Karaa
v. 19	Apr 13, 2017 13:25	Heni Karaa
v. 18	Apr 13, 2017 13:24	Heni Karaa
v. 17	Apr 13, 2017 13:20	Heni Karaa
v. 16	Apr 13, 2017 11:13	Heni Karaa
v. 15	Apr 13, 2017 11:02	Heni Karaa
v. 14	Apr 13, 2017 11:02	Heni Karaa
v. 13	Apr 13, 2017 11:01	Heni Karaa
v. 12	Apr 13, 2017 10:44	Heni Karaa
v. 11	Apr 13, 2017 10:42	Heni Karaa
v. 10	Apr 13, 2017 10:42	Heni Karaa
v. 9	Apr 13, 2017 10:17	Heni Karaa
v. 8	Apr 13, 2017 10:15	Heni Karaa
v. 7	Apr 13, 2017 10:13	Heni Karaa
v. 6	Apr 12, 2017 22:22	Heni Karaa
v. 5	Apr 12, 2017 15:02	Heni Karaa
v. 4	Apr 12, 2017 14:57	Heni Karaa
v. 3	Apr 12, 2017 14:55	Heni Karaa
v. 2	Apr 12, 2017 14:55	Heni Karaa
v. 1	Apr 12, 2017 14:52	Heni Karaa